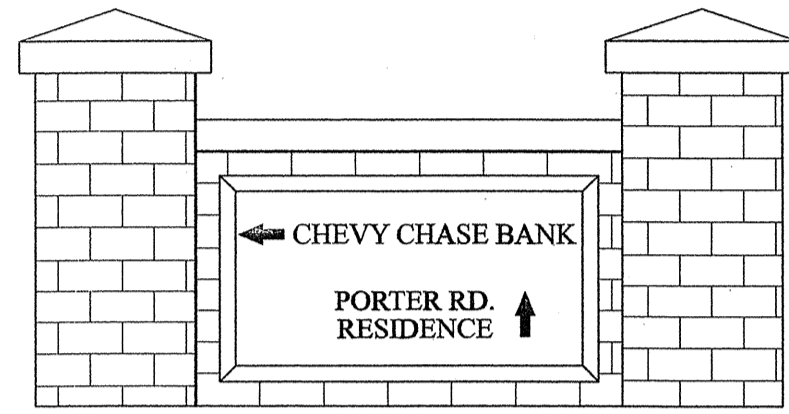
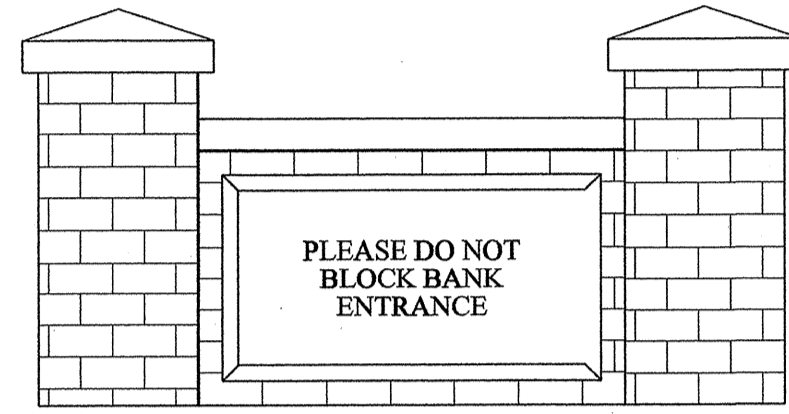


SIGN - A
NOT TO SCALE

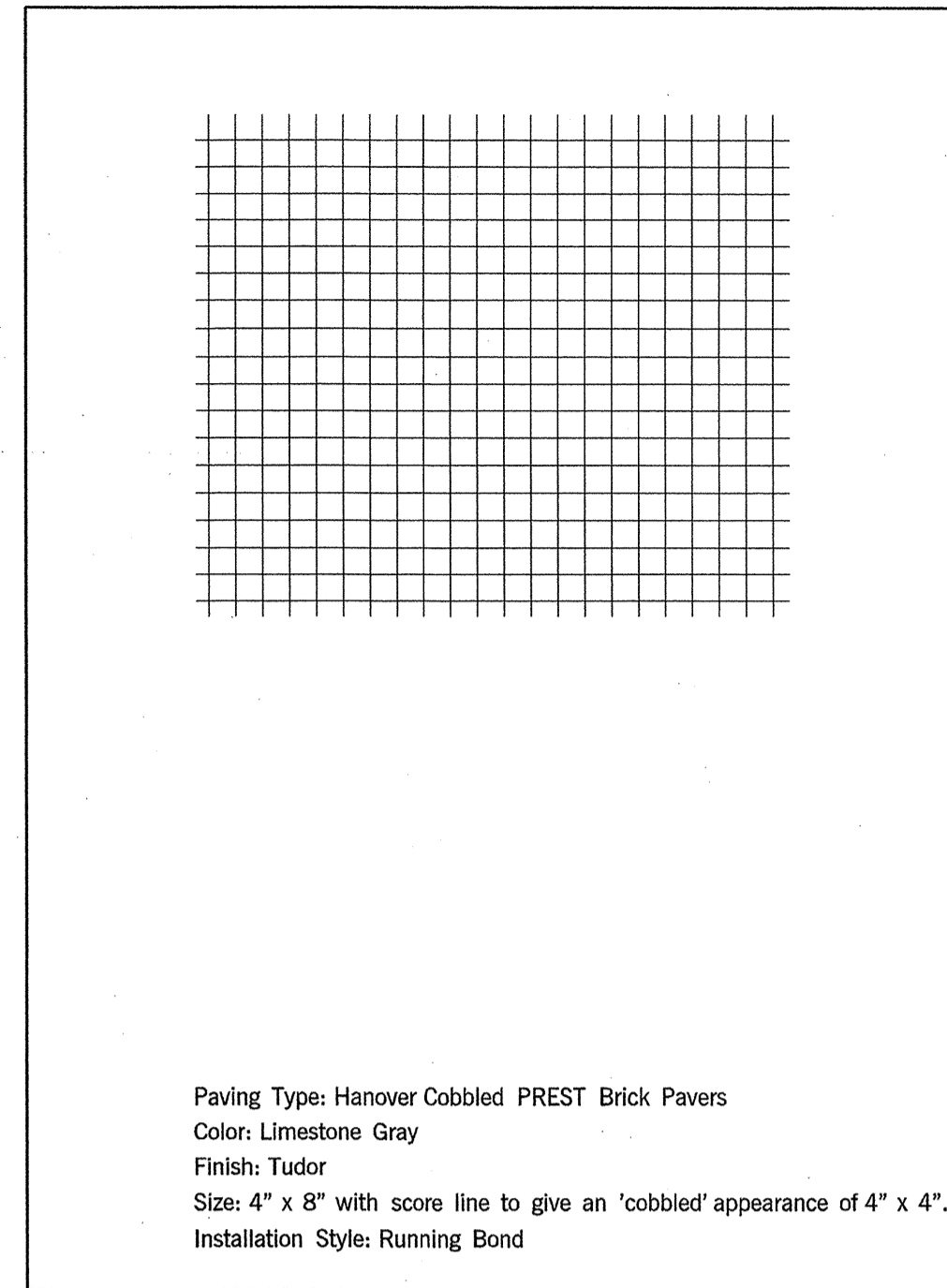


SIGN - B
NOT TO SCALE

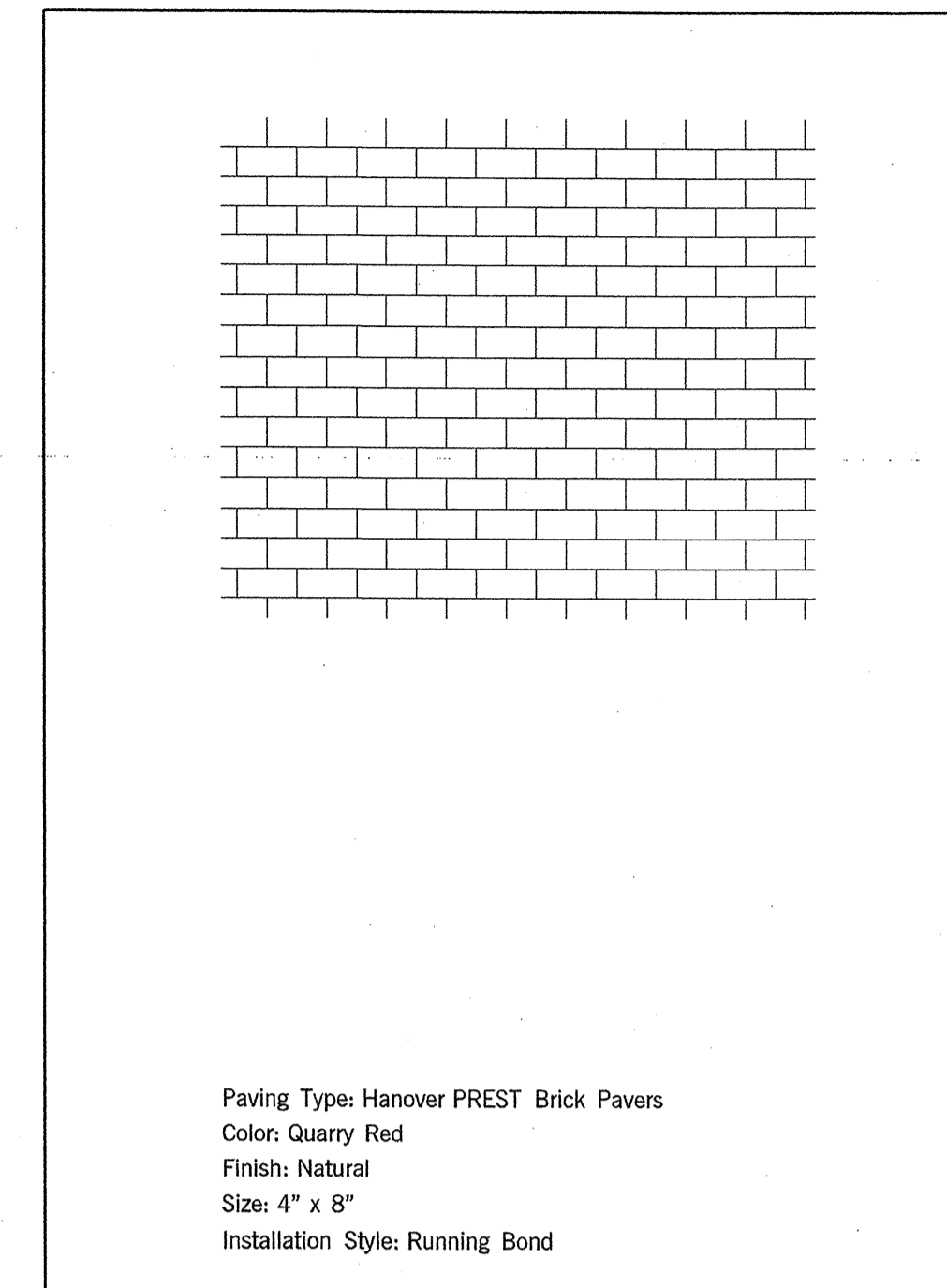


SIGN - C
NOT TO SCALE

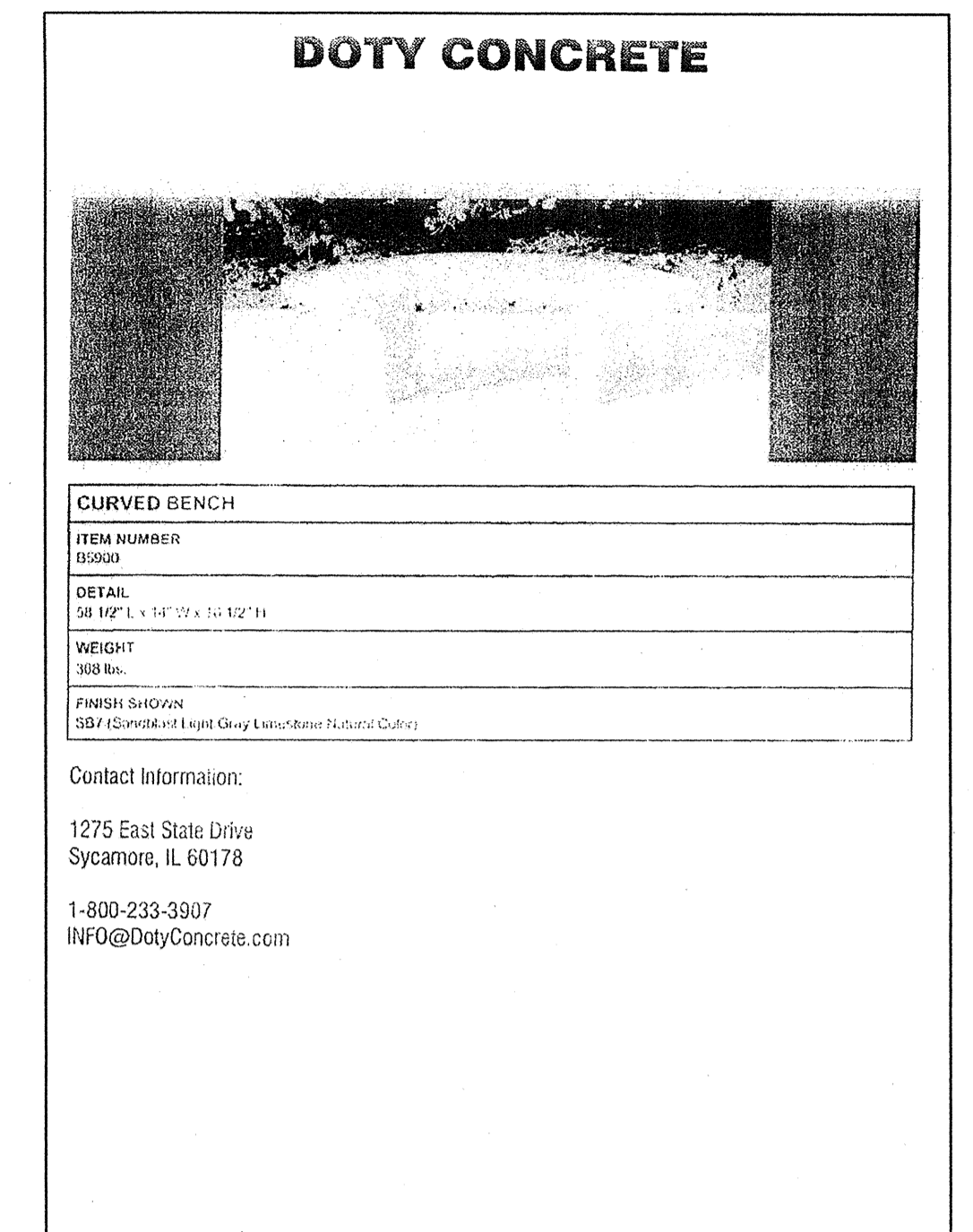
* ALL SITE SIGNS TO BE ENGRAVED ON CONCRETE



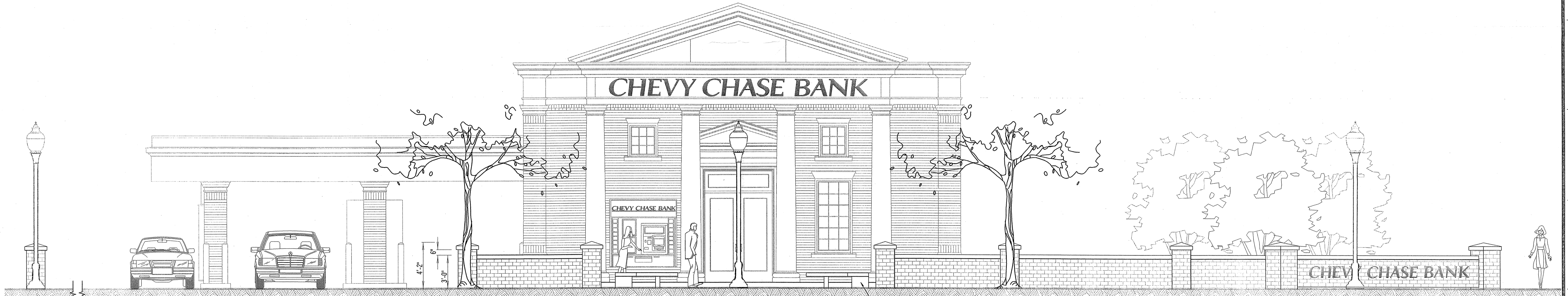
DETAIL 1 - COBBLED PAVERS
NOT TO SCALE



DETAIL 2 - BRICK PAVERS
NOT TO SCALE



DETAIL 3 - CURVED BENCH
NOT TO SCALE



DETAIL 4 - BRICK WALL ELEVATION
NOT TO SCALE

PREPARED FOR:
CHEVY CHASE BANK
CORPORATE FACILITY
7501 WISCONSIN AVE, 9TH FLOOR
BETHESDA, MD 20814
PHONE: 240-497-7032
ATTN: MR. JOSEPH PEARSON, JR.
DATE: 10/30/2007 DGN: J-071361\071361.SP_02.DGN PRF: J-071361\PRF\071361.SP_02.plt TBL: P:\Plot\PenTables\Maryland\Montgomery\VBSp.tbl SCALE: 20 R01-90

No.	REVISION	DATE	BY

G&O
GREENHORNE & O'MARA
CONSULTING ENGINEERS
20410 CENTURY BOULEVARD., SUITE 200, GERMANTOWN, MARYLAND 20874
PHONE: (301) 444-8282 FAX: (301) 444-8181
www.g-and-o.com
FLORIDA • GEORGIA • MARYLAND • NORTH CAROLINA • PENNSYLVANIA • VIRGINIA • WEST VIRGINIA
© LATEST DATE HEREOF

SITE PLAN DETAILS
CHEVY CHASE BANK
AT ASHTON
P395 AND LOT 2 (PLAT-1463) OF THOMAS SUBDIVISION
7th ELECTION DISTRICT
MONTGOMERY COUNTY, MARYLAND

SS DESIGN	SCALE	NONE
DB DRAWN	2 OF 2	
CHECKED	SHEET	
NOV. 2007	071361	R-0000-W
DATE	PROJ. No.	FILE No.